

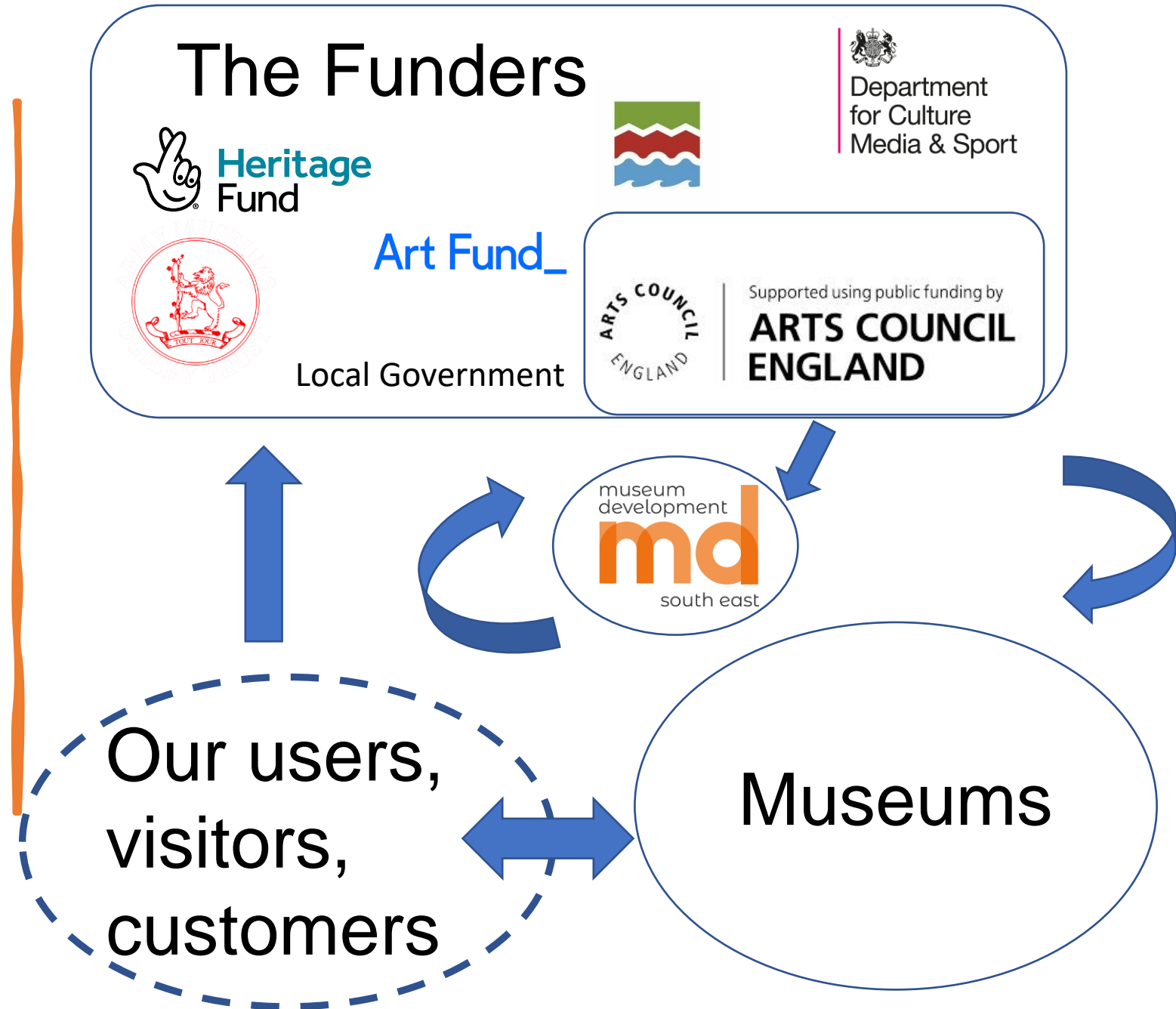


# Berkshire Hampshire Solent Museum Development Update

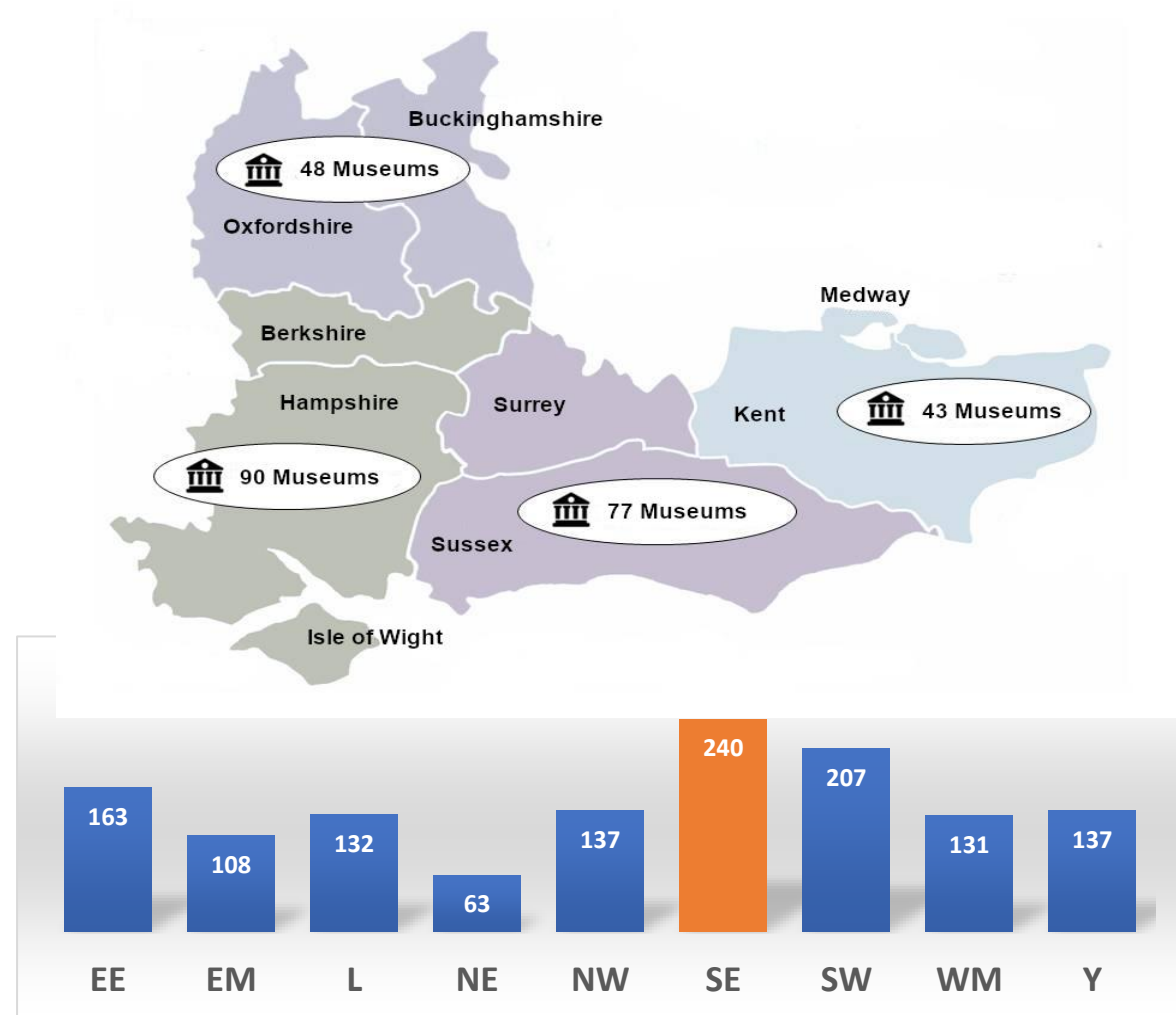
Stephen Lowy

[southeastmuseums.org](http://southeastmuseums.org)

# The Ecology of the Sector



# Context

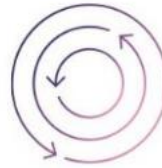


- 240 museums working within the Accreditation Scheme
- 21 formally Working Towards Accreditation

# ACE Investment Principles



**Ambition & Quality**



**Dynamism**



**Environmental Responsibility**



**Inclusivity & Relevance**

# 2022/23 Programme

- Training
- Network support
- Grants
- 1-2-1 surgeries & audits
- Accreditation advice & returns
- Projects & cohort training
- Signposting and resource hub
- Newsletter & social media
- Advice & advocacy

# Annual Museum Survey 2021/22

124 South East museums took part  
58% of all museums responded  
nationally

The survey covers:

- Opening hours
- Audiences
- Finances
- Use of digital
- Workforce and volunteering
- Economic impact



**ma**

south east

**70% of museums** in the south east received grant funding from museum development to support their pandemic recovery, totalling **over £300,000** from 2020-22.

# Digital Engagement in the south east

---

51% increase in social media  
followers for museums in the  
south east

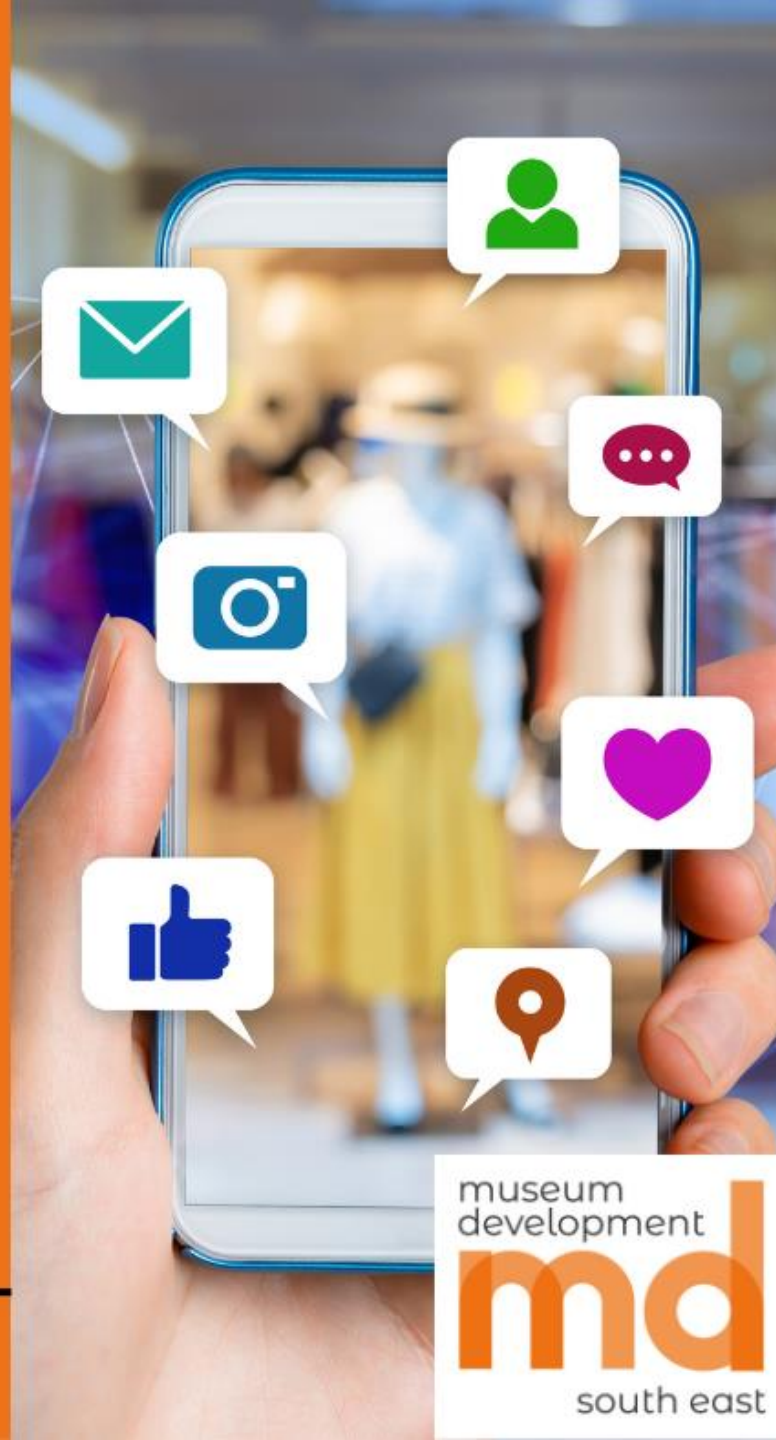
25% increase in website visits  
in 21/22

52% used online ticketing to  
boost income in 21/22

30% of museums in the region  
provided digital sessions for  
education

---

Annual Museums Survey 2022



museum  
development  
**md**  
south east



## DID YOU KNOW?

**South east  
museums have  
seen a  
31% drop  
in volunteer  
hours since the  
pandemic**

**ANNUAL MUSEUMS  
SURVEY 2022**

[southeastmuseums.org](https://southeastmuseums.org)



# 2023/24 Programme Highlights

Ambition & Quality

- Collections Management & development training
- Born Digital & Mixed Collections training with National Archives
- Preventative Conservation training, surgeries and advice
- Collection Care Grants

Collections  
Trust

# 2023/24

# Programme

Dynamism

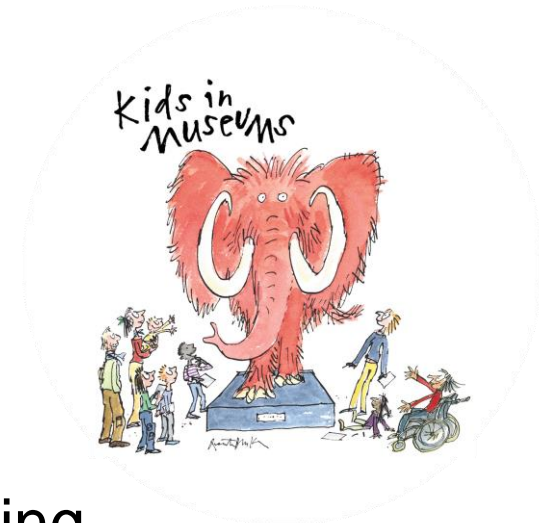
- Accreditation - training & case studies
- Grant writing - workshops, surgeries & Meet the Funder events
- Forward Planning training, Leaders Coffee chats & support for trustees
- Organisational Health Checks
- Volunteer Management training
- Skills Builder Grants
- **SEMD Conference (Feb 2024)**



# 2023/24 Programme

Inclusivity & Relevance

- Equity, Diversity & Inclusion training
- FOH training for family audiences
- Working with young people sessions
- Disability Essentials e-learning
- Access Audits
- Audience Development training and mentoring



# 2023/24

# Programme

Environmental Responsibility

- Carbon Literacy training
- Green Hub resources and video case studies
- Going Green forum to share best practice
- Going Green grants

# Beyond 2024

- South East Museum Development continues in its current form until 31 March 2024.
- ACE committed to 2024-26 Museum Development, delivered in 5 regions instead of 9
- MD will still be delivering training, Accreditation advice, small grants, development programmes, data collection
- Hampshire & Isle of Wight will form part of the new south west region; Berkshire, part of the south east
- SEMD's governing partners are discussing plans for MD2024+ funding applications with counterparts in the south west and east of England.

# Any questions?



[Stephen.lowy@hampshireculturaltrust.org.uk](mailto:Stephen.lowy@hampshireculturaltrust.org.uk)

[Sophie.mclean@hampshireculturaltrust.org.uk](mailto:Sophie.mclean@hampshireculturaltrust.org.uk)

[southeastmuseums.org](http://southeastmuseums.org)

@SEmuseumD

@MDO\_hamp\_solent

@southeastmuseumdevelopment490

Sign up for SEMD's monthly newsletter

