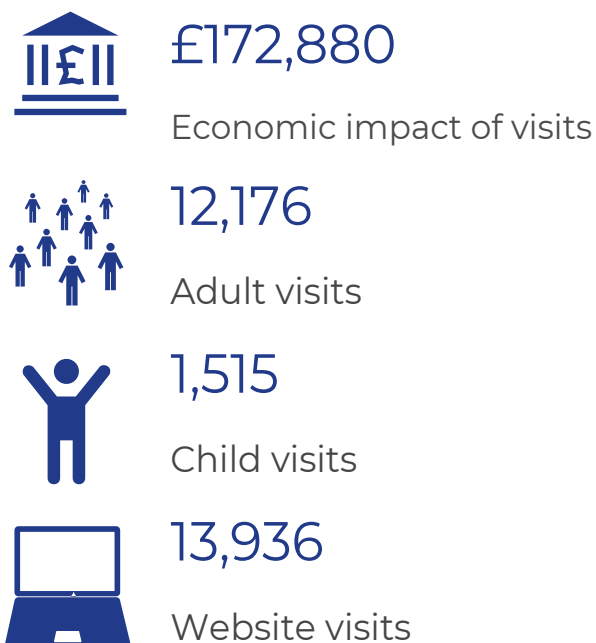
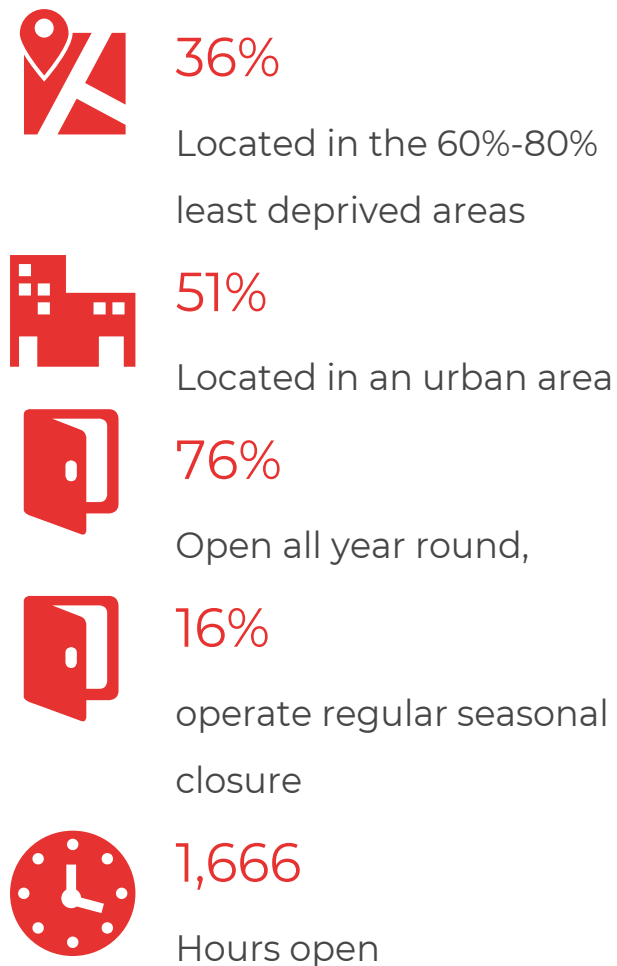
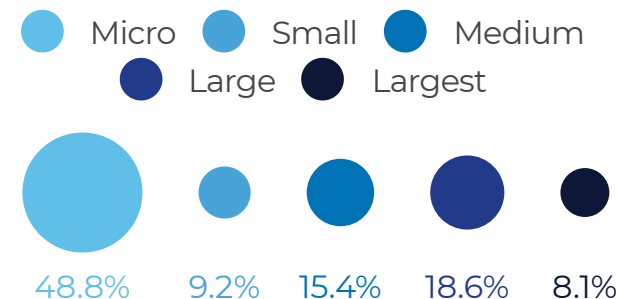


What does a museum in Surrey, East & West Sussex look like?

27 of 70 museums within scope took part. The data they provided has been extracted from regionally weighted data to be representative of all independent, local authority and English Heritage museums in the area. The values presented are annual, 2019/20.



49% receive fewer than 10K visitors each year



Supported using public funding by
ARTS COUNCIL ENGLAND

What does a museum in Surrey, East & West Sussex look like?

27 of 70 museums within scope took part. The data they provided has been extracted from regionally weighted data to be representative of all independent, local authority and English Heritage museums in the area. The values presented are annual, 2019/20.



£130,895

Total income



4*

Number of staff FTE



£7,000

Retail income



40

Number of volunteers



£3,044

One-off donations on-site



£47,015

Value of volunteer hours



£70,500

Regular public subsidy



£36,099

Grants income

This pdf is an excerpt from the Annual Museum Survey 2020. To view the full South East Annual Museum Survey 2020 please visit

<https://southeastmuseums.org/>

The Annual Museum Survey is operated by South West Museum Development hosted by Bristol City Council with support from Pearson Insight. For further information on the process undertaken for the Annual Museum Survey 2020 please contact museum.data@bristol.gov.uk



Supported using public funding by
**ARTS COUNCIL
ENGLAND**

*This data excludes National Trust and National museums.
All values are median. *n14 museums provided FTE*